

LK7

Series Slit Coupling - Clamp Type - Parallel

Features

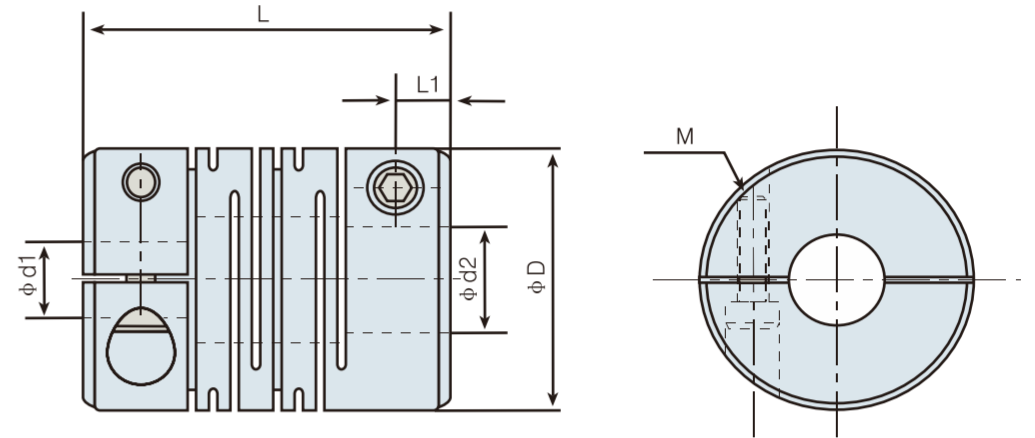
- One-piece metallic flexible coupling
- Zero backlash
- Absorption of misalignment of parallel, angular and shaft end-play by spring action
- Identical clockwise and anticlockwise rotational characteristics

Order Information

	LK7		C40		14	H7		18	H7
Blank: AL S: SS	Series No.	-	Size	Blank: Standard K: Keyway both ends	-	Finish bore d1	Tolerance Blank: H8	-	Finish bore d2 Tolerance Blank: H8

Keyway Note:

When both bores are with keyway, code "K" should be added after the outer diameter of the coupling. If only one bore is with keyway, code "K" should be added after the tolerance code of the relative bore size only (Do not add to the outer diameter). If any customized dimension required, please consult us.



Dimensions

Unit: mm

Model	Φd1 Φd2		ΦD	ΦD1	L	L1	L2	Screw	Tightening Torque (N.m)
	Min. Bore	Max. Bore							
LK7-C12-□□-□□	3	5	12	14	18.5	2.8	3.8	M2	0.4-0.5
SLK7-C12-□□-□□	3	5	12	14	18.5	2.8	3.8	M2	0.4-0.5
LK7-C16-□□-□□	4	6.35	16	16.5	23	3.1	5.1	M2.5	1.0-1.1
SLK7-C16-□□-□□	4	6.35	16	16.5	23	3.1	5.1	M2.5	1.0-1.1
LK7-C20-□□-□□	5	9.525	20	20.5	26	3.75	6.8	M2.5	1.0-1.1
SLK7-C20-□□-□□	5	9.525	20	20.5	26	3.75	6.8	M2.5	1.0-1.1
LK7-C25-□□-□□	5	12	25	25	31	4.25	8.5	M3	1.5-1.9
SLK7-C25-□□-□□	5	12	25	25	31	4.25	8.5	M3	1.5-1.9
LK7-C32-□□-□□	6	14	32	32	41	6	10	M4	3.4-4.1
SLK7-C32-□□-□□	6	14	32	32	41	6	10	M4	3.4-4.1
LK7-C40-□□-□□	8	18	40	40	56	8.5	13	M5	7.0-8.5
SLK7-C40-□□-□□	8	18	40	40	56	8.5	13	M5	7.0-8.5
LK7-C50-□□-□□	12	19	50	50	71	8.5	16	M6	14-15
SLK7-C50-□□-□□	12	19	50	50	71	8.5	16	M6	14-15
LK7-C63-□□-□□	12	24	63	63	90	12.5	19	M8	30-35
SLK7-C63-□□-□□	12	24	63	63	90	12.5	19	M8	30-35

Note:

1. For other bore sizes which are not listed above, customized ones are available, please consult us.
2. Standard bore tolerance is for the shaft with tolerance h7 or h8, if other tolerance is required, please consult us.

Specifications

Model	Rated Torque (N.m)	Max. Rotation Speed (rpm)	Moment of Inertia (Kg.m²)	Static Torsional Stiffness (N.m / rad)	Allowable Misalignment			N.W. (g)
					Eccentricity (mm)	Angularity (°)	Shaft End-play (mm)	
LK7-C12-□□-□□	0.4	10000	9.0×10 ⁻⁸	34	0.1	1.5	±0.3	4.3
LK7-C16-□□-□□	0.5	9300	3.4×10 ⁻⁷	46	0.1	1.5	±0.3	9.3
LK7-C20-□□-□□	1	7500	9.4×10 ⁻⁷	118	0.1	1.5	±0.3	16
LK7-C25-□□-□□	2	6000	2.7×10 ⁻⁶	167	0.15	1.5	±0.35	28
LK7-C32-□□-□□	4	4600	9.6×10 ⁻⁶	228	0.15	1.5	±0.35	63
LK7-C40-□□-□□	6.3	3600	3.3×10 ⁻⁵	346	0.2	1.5	±0.35	143
LK7-C50-□□-□□	11	3000	1.0×10 ⁻⁴	580	0.2	1.5	±0.35	274
LK7-C63-□□-□□	16	2200	3.2×10 ⁻⁴	843	0.2	1.5	±0.35	562
SLK7-C12-□□-□□	0.5	10000	2.5×10 ⁻⁷	62	0.1	1.5	±0.3	12
SLK7-C16-□□-□□	0.6	9300	9.5×10 ⁻⁷	83	0.1	1.5	±0.3	26
SLK7-C20-□□-□□	1.2	7500	2.6×10 ⁻⁶	246	0.1	1.5	±0.3	45
SLK7-C25-□□-□□	2.2	6000	7.6×10 ⁻⁶	315	0.15	1.5	±0.35	79
SLK7-C32-□□-□□	4.4	4600	2.7×10 ⁻⁵	845	0.15	1.5	±0.35	178
SLK7-C40-□□-□□	7.5	3600	9.6×10 ⁻⁵	990	0.2	1.5	±0.35	410
SLK7-C50-□□-□□	13	3000	2.8×10 ⁻⁴	1380	0.2	1.5	±0.35	773
SLK7-C63-□□-□□	19	2200	9.0×10 ⁻⁴	1790	0.2	1.5	±0.35	1583

Note:

1. Moment of inertia and unit N.W. are based on the maximum bore & shaft size.
2. Max. rotation speed does not take dynamic balance into account.